

How to use a GPS receiver

Exercise Four: Navigating

Exercise requires pencil/pen to answer questions

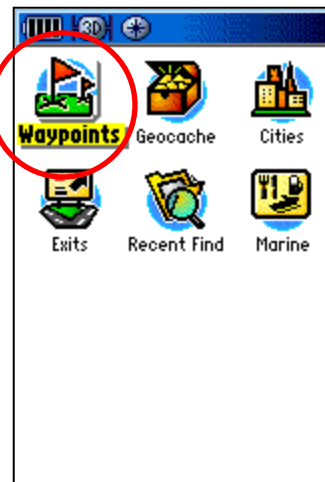
Objective: Navigate to several pre-loaded destinations using the compass screen display.

Procedure:

Part one ~ Selecting a waypoint to find

1. If you have not done so already, power on your GPS receiver. As in Exercise One, the receiver goes through the copyright (Splash) screens before it gets to the satellite screen.

2. Next, press the <FIND> key to bring up the 'Find Menu' screen.



3. Using the <ROCKER> key, highlight 'Waypoints' and press the <ENTER> key.

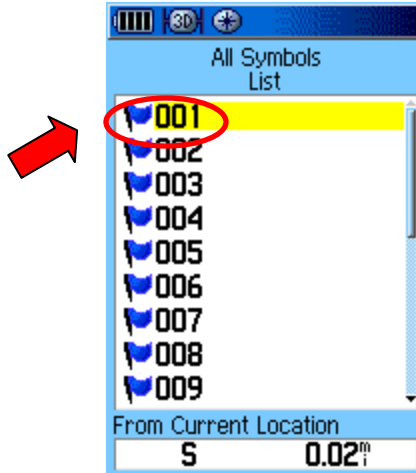


4. You are now at the 'Waypoints' menu screen. Press <QUIT> to get rid of Alphabet and Number pad.

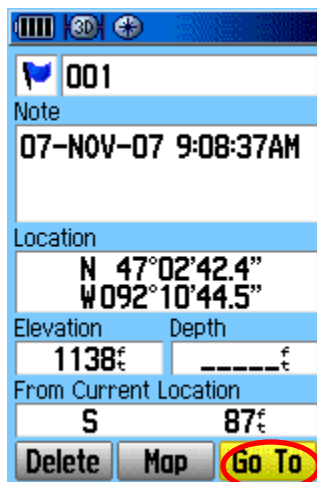
How to use a GPS receiver

Exercise Four: Navigating

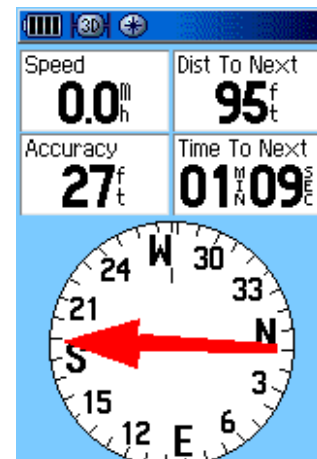
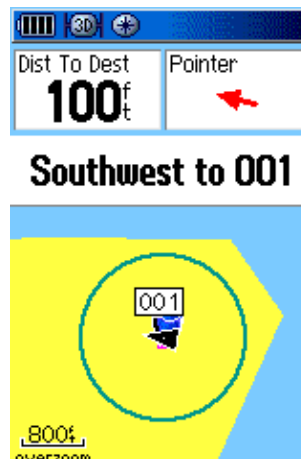
Exercise requires pencil/pen to answer questions



5. Use the <ROCKER> key to move up and down through the list of waypoints until you find the one you were requested to locate.
6. Once you have your waypoint highlighted, press the <ENTER> key. You will be taken to the 'Waypoint' screen.



7. Use the <ROCKER> key to highlight the 'GOTO' button and press <ENTER>. This will bring you to the Map screen. Press <PAGE> to get to the 'Compass' screen.



How to use a GPS receiver

Exercise Four: Navigating

Exercise requires pencil/pen to answer questions

Part two ~ Navigating using the compass screen

1. *You are now ready to navigate to your waypoint.*
2. *Holding the GPS level, adjust the direction you are facing right or left to line up the Red Arrow with the black line.*

** Like This!*



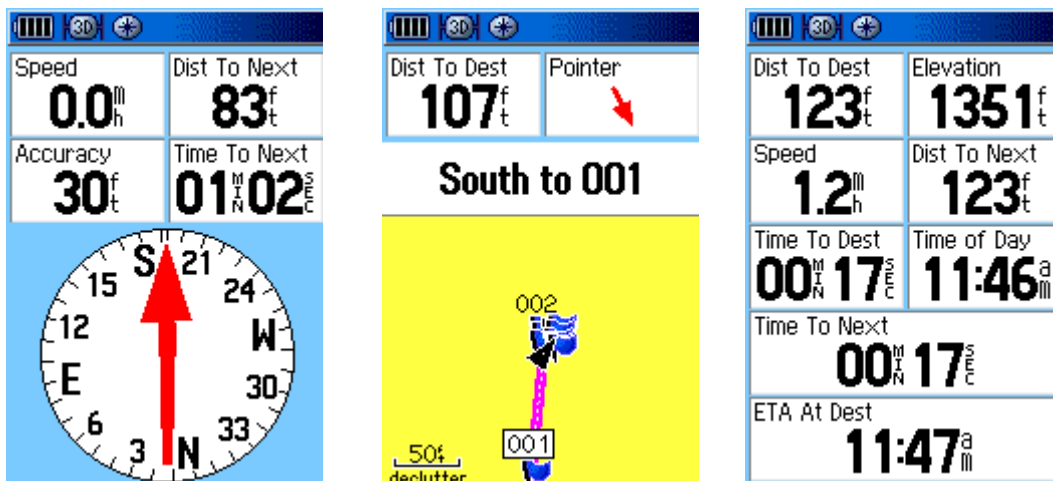
3. *As you proceed in the right direction you will notice the distance and time to next will reduce.*
4. *As you approach your destination a box will pop up 'Arriving at Destination'. Simply press <ENTER> to get rid of this box. (If you do not see your destination right away, it may be helpful to approach the target waypoint from different directions.) Record the letter you find at the destination in the appropriate box.*

How to use a GPS receiver

Exercise Four: Navigating

Exercise requires pencil/pen to answer questions

5. To find your next point, simply repeat the steps of part 1 and 2 of this exercise. Note: Try using Map Screen and Trip Computer screens to navigate in addition to the Compass Screen. Find the one that works the best for you.



***Note: When you have finished using the navigation function, please turn this feature off. You can do this by going to the Compass Screen, press <MENU>, use <ROCKER> to highlight 'Stop Navigation' option and press <ENTER>.

